



**YOUR EDELBROCK CONNECTION FOR NEW PRODUCTS & INFORMATION • MARCH/APRIL 2008**

**NOW INTRODUCING THE NEW NASCAR EDITION RPM AIR-GAP® INTAKE MANIFOLDS FOR CHEVY, CHRYSLER AND FORD**



**AVAILABLE NOW!**

The Air-Gap isolates the runners from engine heat for a cool, dense mixture and more power

RPM Air-Gap manifold #75213 for S/B Ford 289-302

**Edelbrock NASCAR Edition Manifolds Available Now!**



Nothing is more American than NASCAR stock car racing and Edelbrock manifolds. Now available is the exclusive Edelbrock NASCAR Edition RPM Air-Gap manifold. Based on our popular RPM Air-Gap designs, these manifolds will deliver superior and reliable performance along with unique looks. The Edelbrock NASCAR Edition RPM Air-Gap manifolds stand out from the crowd with their durable and distinctive black powder coated finish and attractive full color emblem.



RPM Air-Gap manifold #75013 for S/B Chevy

**FREE special edition hat included in the box with every purchase of any Edelbrock NASCAR Edition RPM Air-Gap manifold!**



RPM Air-Gap manifold #75613 for B/B Chevy



RPM Air-Gap manifold #75763 for S/B Chrysler

Part #	Description	List	Jobber
75013	Small-Block Chevy 262-400 (non-EGR)	\$430.95	\$349.57
75613	Big-Block Chevy 396-502 with oval ports (non-EGR)	\$474.95	\$385.20
75763	Small-Block Chrysler 340-360 (non-EGR)	\$494.95	\$401.49
75213	Small-Block Ford 289-302 (non-EGR)	\$484.95	\$393.58

**NEW PERFORMER EPS MANIFOLD FOR SMALL-BLOCK CHEVY**

With Oil Fill Tube and Breather



Performer EPS #27034 with EnduraShine finish

The new Performer EPS manifold #2703 combines a modern runner design with a front mounted oil fill tube for those who want the vintage look of our Classic valve covers with no breathers. The #2703 has a runner design tuned for peak torque around 3500 rpm on a 350 cid engine and is intended for square-bore carbs like the Performer Series or Thunder Series AVS. Includes Oil Fill Tube (not installed) and matching push-in Breather. The Oil Fill Tube and Breather are also available separately as #4803.

Part #	Description	List	Jobber
2703	Performer EPS w/oil fill tube for S/B Chevy	\$246.95	\$200.56
27034	Performer EPS w/oil fill tube for S/B Chevy EnduraShine	\$334.95	\$272.11
4803	Chrome finish GM style oil fill tube and breather	\$16.95	\$12.97

**NEW GLIDDEN VICTOR 351W MANIFOLD**



Glidden Victor 351W #2828

This new race-intended manifold was developed with noted Ford drag racer Billy Glidden. It features a 4500 series carb pad for high rpm and large displacement Windsor headed small-block Fords with a 9.5" deck height. The runner area has been enlarged and the plenum has been increased to produce more high rpm power.

Part #	Description	List	Jobber
2828	Glidden Victor 351W	\$528.95	\$429.73

# EDELBROCK'S ALL NEW PRO-FLO XT ELECTRONIC FUEL INJECTION SYSTEM



**443 HP  
419 FT/LBS.  
OF TORQUE!**

**Available  
April**

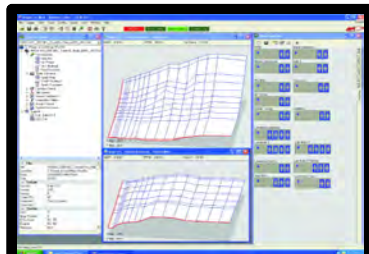
Pro-Flo XT kit #3527 for Small-Block Chevy

## The Latest Generation of EFI Systems

Edelbrock has joined forces with EFI Technology Inc., a world leader in electronic engine management and monitoring, to design an all-new EFI system. Combining user-friendly design with high-technology components, we have created the ideal street high-performance EFI system. The exciting new Edelbrock Pro-Flo XT EFI System will set the standard for the next generation of EFI design. Together we have developed the only system that provides power and two ways to adjust fuel and spark curves... Pro-Flo XT EFI. Our latest dyno test on a RPM small-block Chevy showed an increase in horsepower and torque with a peak 443 HP and 419 ft/lbs. of torque.

## Systems Feature:

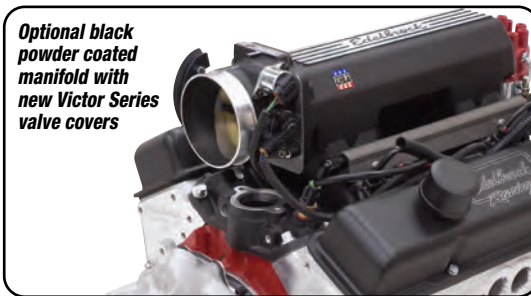
- Ready-to-run base calibration and exclusive XT Calibration Module
- Pro-Flo XT software has high resolution fuel and spark tables for nearly unlimited combinations
- Delivers proven performance and maximum tunability right out of the box
- ECU includes fully sequential injection, downloadable calibrations for different engine parameters and a host of options to customize the system exactly to your specifications
- Includes everything you need for a complete installation: Edelbrock Pro-Flo XT EFI manifold, Edelbrock 90mm throttle body, extruded aluminum fuel rails and Pico fuel injectors that are assembled at the factory, programmable ECU, wiring harness and exclusive Calibration Module



Pro-Flo XT software has high resolution fuel and spark tables for nearly unlimited combinations



EFI Technology, Inc. is a world leader in advanced electronic engine management. They produce products for all forms of racing including Indy cars, sports cars, dragsters and touring cars. Their technology has been developed to meet the demands of the new Edelbrock Pro-Flo XT System.



Optional black powder coated manifold with new Victor Series valve covers

Part #	Description	List	Jobber
3527	Pro-Flo XT kit for 1986 & earlier SBC heads	\$3,748.95	\$3,331.21
35273	Pro-Flo XT kit for 1986 & earlier SBC heads w/black powder coated finish	\$3,810.95	\$3,385.96
3528	Pro-Flo XT kit for Edelbrock E-Tec or GM Vortec SBC heads	\$3,775.95	\$3,355.21
35283	Pro-Flo XT kit for Edelbrock E-Tec or GM Vortec SBC heads w/black powder coated finish	\$3,837.95	\$3,409.96

# NEW THROTTLE BODY INTAKE ELBOWS

These new elbows were developed by the Edelbrock engineering team using the latest in Computational Fluid Dynamic software. Edelbrock Throttle Body Elbows are the best way to adapt LS1, LS2 and Ford 5.0L-based throttle bodies to EFI manifolds with traditional square-bore mounting pads. An internal divider optimizes flow quantity and distribution into the manifold and they can be mounted forward, backward, or sideways on Victor EFI square-bore manifolds. Three versions allow EFI tuners to position the throttle body low for hood clearance or higher for max airflow.



Low Profile Intake Elbow #3848

## Box Style Elbows

These box style elbows add the great EFI appearance to carburetor-style EFI manifolds. Their performance matches our High Flow Elbow #3849 up to 400 horsepower. Sideways Mount Box Style Elbow #3851 is intended for sideways mounted applications. Both accept LS1, LS2 or Ford 5.0L-based throttle bodies. Go to our web site for more information.



Forward Mount Box Style Intake Elbow #38503

Part #	Description	List	Jobber
3847	Ultra low profile intake elbow, up to 90mm throttle body	\$149.95	\$118.65
38473	Ultra low profile intake elbow, up to 90mm throttle body black powder coated	\$161.95	\$131.56
3848	Low profile intake elbow, up to 90mm throttle body	\$136.95	\$111.38
38483	Low profile intake elbow, up to 90mm throttle body black powder coated	\$161.95	\$131.56
3849	High flow intake elbow, up to 95mm throttle body	\$145.95	\$118.65
38493	High flow intake elbow, up to 95mm throttle body black powder coated	\$161.95	\$131.56
3850	Forward mount box style intake elbow, up to 90mm throttle body	\$202.95	\$164.92
38503	Forward mount box style intake elbow, up to 90mm throttle body black powder coated	\$207.95	\$163.13
3851	Sideways mount box style intake elbow, up to 90mm throttle body	\$202.95	\$164.92
38513	Sideways mount box style intake elbow, up to 90mm throttle body black powder coated	\$207.95	\$163.13

## NEW CLASSIC SERIES AIR CLEANERS TO MATCH OUR POPULAR VALVE COVERS

We first started making our Classic Series valve covers in the late '50s and they're still a classic today. Now we've added a new line of matching air cleaners to complete the classic Edelbrock look for any street rod or muscle car! Go to our web site for complete applications.



- Manufactured with heavy-gauge sand-cast aluminum in the USA
- Includes a cleanable cotton gauze and wire mesh air filter for excellent filtration and durability
- Designed to work with standard 5-1/8" carbs or 4-bbl. throttle bodies
- Choose from single or dual-quad oval, or large round designs for that "just right" look
- Air cleaner top fastens from the bottom for a clean show quality look
- Available in 2 finishes: polished or black powder coated with polished fins and an Edelbrock logo for a custom look
- Available for AMC/Jeep, S/B Chevy, 409 Chevy, B/B Chevy, S/B Ford, FE Ford and Pontiac.

## NEW VICTOR SERIES AIR CLEANERS AND VALVE COVERS

Edelbrock Victor Series air cleaners and valve covers feature die-cast aluminum that is black powder coated with a finely textured surface and etched Edelbrock Racing logo for a pleasing and unique appearance. Go to our web site for complete applications.



- Air cleaners work with all popular 5-1/8" carbs or 4-bbl. throttle bodies
- Your choice of oval or round single-quad design
- Includes a knock-out in base and adapter for crankcase ventilation
- Features a cleanable cotton gauze and wire mesh air filter for excellent filtration and durability
- Valve covers are die-cast and machined with 1-1/4" breather hole
- Valve covers are available for S/B, B/B Chevy and S/B Ford

## PERFORMER X MANIFOLD

### For Acura and Honda

The Performer X intake manifolds for Acura and Hondas are engineered for street/strip applications where peak torque and horsepower gains are realized between 4,500-8,200 RPM. The larger-than-stock plenum volume and 9" runner length are tuned for producing peak torque at low to mid range RPM. This manifold is ideal for street/strip all-motor and turbo applications.



Part #	Description	List	Jobber
4771...	1994-01 Acura/Honda B18C and GSR engines	\$469.95	\$381.90
4774...	1994-00 Acura/Honda B16A, Type R and B18C5	\$469.95	\$381.90
4778...	1991-00 Acura/Honda B18A/B	\$469.95	\$381.90

## NEW EDELBROCK PRODUCTS FOR THE 348/409 CHEVY



### Great Components for a Great Looking Package!

Edelbrock is working quickly to get all these great parts to you. Look for these items: Performer RPM 409 cylinder heads, dual-quad intake, finned classic valve covers, finned classic dual-quad air cleaner, Victor Series billet fuel pump and the Victor Series 409 water pump. Go to our web site for more information.

## NEW BRAKE LINE KITS AND CAT-BACK EXHAUST FOR THE 2007-08 TOYOTA TUNDRA



### New Components for the 2007-08 Toyota Tundra

Along with a new Cat-Back System for the 2007 Toyota Tundra, Russell engineers have also developed a new set of brakelines for better braking performance.

Part #	Description	List	Jobber
5716.....	2007-08 Toyota Tundra Cat-Back System side outlet	\$596.95	\$470.04
5718.....	2007-08 Toyota Tundra Cat-Back System split rear outlet	\$906.95	\$714.60
688490...	2007 Toyota Tundra 4WD DOT legal brake line kit	\$248.95	\$174.38



# EDELBROCK OFFERS NEW LINE OF LS-SERIES VALVE TRAIN COMPONENTS

433 HP, 421 Ft/Lbs. of Torque – No Tuning Required!

Designed for a “no tuning required” camshaft upgrade in 1997 and later LS1/LS6/LS2 based GM engines, the **Edelbrock RPM #2218 camshaft delivers 433 HP and 421 Ft/Lbs. of Torque** (as tested on a 5.7L 2001 LS6 engine) without touching your factory tune. This combination of high lift, low duration and wide lobe separation delivers the performance you want while maintaining great low speed idle and drivability in automatic or manual transmission cars. **Upgrade your LS with Edelbrock RPM Xtreme LS-series heads, #61949, and you will achieve 452 HP and 438 Ft./Lbs. of Torque – without touching your tune.**

## Edelbrock Sure Seat LS-Series Conical Spring Package

Edelbrock Sure Seat LS-Series springs are engineered with .166" thick ovate wire, offering more clearance for reduced coil bind when paired with high lift camshafts. Match with your choice of steel retainers, #9707, or Titanium retainers, #9708.

## New 2-Piece Timing Cover

Edelbrock 2-Piece Timing Covers allow you to quickly and accurately replace the camshaft on your LS1/LS2/LS6 without removal of the balancer or steering gear.

### Cam #2218 Specs.

Cam Lift	Duration @ 0.050"	Lobe Sep.
.573" I / .580" E	207° I / 220° E	118°

### Conical Spring Specs.

Installed Ht.	Max. Lift	Free Length	Coil bind	O.D. (base)	O.D. (top)
1.800" (138 lbs.)	.600" (326 lbs.)	2.260"	1.140"	1.301"	1.066"

Part #	Description	List	Jobber
2218	.....LS1 1996-02 Performer RPM hydraulic roller camshaft.....	\$513.95	\$382.51
4254	.....LS1 2-piece timing cover.....	\$248.95	\$185.45
4255	.....LS2, LS7 and later model trucks 2-piece timing cover.....	\$258.95	\$192.52
5768	.....LS1 Performer RPM valve springs.....	\$279.95	\$220.72
9707	.....LS1 Conical spring retainers (steel).....	\$167.95	\$133.05
9708	.....LS1 Conical spring retainers (titanium).....	\$247.95	\$195.29



Hydraulic roller cam #2218, Performer RPM valve springs #5768 and conical spring retainers #9707



2-piece timing cover #4254



## RUSSELL COMPLETE FUEL SYSTEM KITS

Complete Fuel System Kits include a state-of-the-art Edelbrock Electric Fuel Pump #1791 offering maximum performance in a compact package. Kits also include matching Russell ProFilter fuel filter, a dual-feed carb kit with fittings, a fuel pump relay and wiring assembly, 20 feet of our ProClassic or traditional ProFlex hose, plus an assortment of straight, 45° and 90° hose ends, adapters and mounting brackets.

- Available with traditional red/blue fittings and ProFlex hose or black/silver fittings with ProClassic hose for a unique look!
- Includes everything you need to build a complete fuel system
- Kits Include: Edelbrock Electric Fuel Pump, Fuel Filter, Dual-Feed Carb Kit, Fuel Pump Relay Kit, Pressure Gauge, ProClassic or ProFlex Hose

Part #	Description	List	Jobber
641580	.....Edelbrock Dual-Feed Thunder Series AVS carbs with Red/Blue finish.....	\$870.95	\$609.84
641583	.....Edelbrock Dual-Feed Thunder Series AVS carbs with Black/Silver finish.....	\$905.95	\$634.50
641590	.....Holley/Demon 4150 Dual-Feed carb with Red/Blue finish.....	\$891.95	\$624.27
641593	.....Holley/Demon 4150 Dual-Feed carb with Black/Silver finish.....	\$939.95	\$658.26

# EDELBROCK PROMOTES REX URASAKI TO SALES MANAGER POSITION



Edelbrock didn't have to look far to fill the recently vacated Sales Manager position. Rex Urasaki, formerly Edelbrock's New Product Coordinator has been appointed to Sales Manager. Rex has been a part of the Edelbrock team since 2002, specializing in data management of new product development, tradeshow coordination, market analysis and new product integration. Prior to coming on board with Edelbrock in 2002, Rex worked for NOS and Holley.

According to Vic Edelbrock, President and CEO, "Rex has earned this appointment and is a valuable asset to the sales team. Rex will now have more direct contact and sales management responsibilities." In his own words, Rex stated, "I look forward to providing the highest level of service, quality and communication that Vic expects from all of us and am honored to be able to work closer with our valued customers and everyone that makes up our remarkable sales force."

According to Steve Whipple, Edelbrock VP of Sales, "Rex will now be directly managing several accounts in support of the Edelbrock and Russell brands. He'll be dealing directly with our sales representative and distribution network, further enhancing our sales and marketing communications." As an automotive and powersports enthusiast, Rex brings a wealth of experience to the table. His passion for automotive performance and racing is equaled only by his dedicated work ethic and exceptional analytical skills. Rex has many years of diverse work experience in retail and manufacturing and will have an immediate and positive impact to the position of Sales Manager.



**EDELBROCK IS PROUD TO SUPPORT THE UNITED STATES OF AMERICA!**

www.edelbrock.com

Edelbrock

2700 California Street • Torrance, CA 90503  
Phone: (310) 781-2222 • Sales Fax: (310) 320-1187  
Tech: (800) 416-8628, 7am to 5pm PST, M-F

March/April 2008

© 2008 Edelbrock Corporation